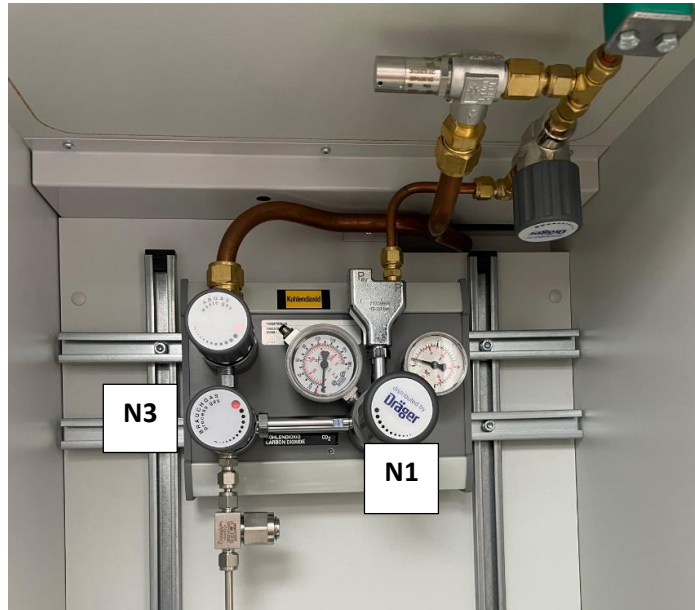


How to use CO2 (do not touch any valves not mentioned here)

1. Start the CO2 controller: turn on the knob on the middle extension cord, marked CO2+Heating
2. Exchange the microscope sample holder frame to the frame suitable for the gas usage
3. **You need to wait 20 minutes before you can start the gas for the CO2 sensor to warm up**
4. Start the CellVivo software
5. Open the valve N1 fully



6. Open valve N2 (on the gas bottle) fully and give a quarter turn back
7. Open valve N3 (Brauch gas) clockwise: slowly, small turns, when fully opened- turn a quarter turn back. The gas level should be between 20 and 60 bar. If it is approaching 20 bar, please inform Jennifer Sevecke-Rave jennifer.sevecke-rave@uni-oldenburg.de
8. Open the valve N4, it should show green instead of red. (It allows just open close positions)
9. Open the light grey handle behind N4



10. Close the valve N1 slowly until it shows 5 bar.

11. On the valve N4 clockwise, turn the light grey handle to reach 1bar. **Max allowed is 1.5bar** ↻
12. In the CELLVivo software set on for the CO2 gas. Use 5%.
13. This is how valves and controller look when CO2 is supplied



Finish the process:

1. Stop the CO2 flow in the software
2. Close the software
3. Turn valve N4 counterclockwise to close ↻
4. Close valve N4 from green to red
5. Close the gas bottle valve N2
6. Open valve N1 ↻
7. Close valve N3